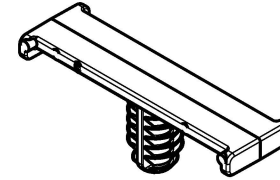


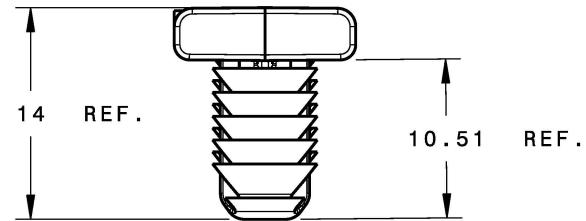
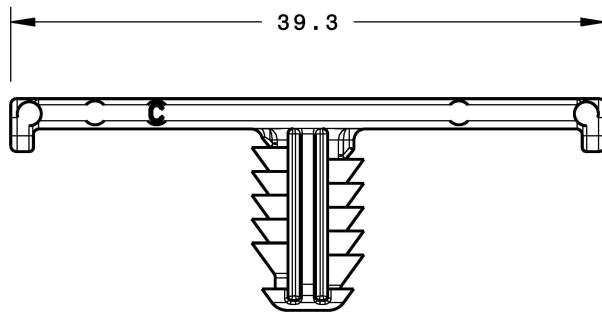
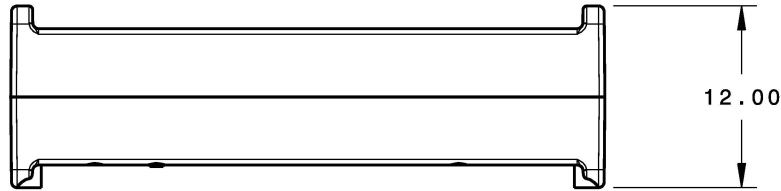
REFERENCE:

PERFORMANCE REQUIREMENTS AT DRY AS MOLDED:

1. FIR TREE PUSH IN FORCE: REF. 10 LBS MAX IN A 6.5mm HOLE AND A PLATE THICKNESS OF 1.8mm
2. FIR TREE PULL OUT FORCE: REF. 30 LBS MIN IN A 6.5mm HOLE AND A PLATE THICKNESS OF 1.8mm
3. SHEET METAL THICKNESS RANGE: 0.70mm - 5.75mm
4. CIRCULAR HOLE SIZE DIAMETER: 6.5mm +/- 0.40mm
5. APPLICABLE HEX HOLE: 6.35mm +/- 0.25mm



Isometric view  
Scale: 1:1



PART NUMBER	MATERIAL	COLOR
TC6FT6	NYLON 6/6, IM, HS, UV RESISTANT	BLACK
	NYLON 6/6, IM, HS	NATURAL

INVENTORS

**HellermannTyton®**

ALL PROPRIETARY RIGHTS IN THE SUBJECT MATTER SHOWN ON THIS DRAWING ARE EXCLUSIVE PROPERTY OF HELLERMANNTYTON

name	date	city, state
S. ADAMS	3/20/2007	MENOMONEE FALLS, WI.

REVISIONS

REVISIONS	DRAWN by	AAC
	DATE	03/30/12
	ECN #	012060
	PART LEVEL	C

DIMENSIONS

DIMENSIONS	TOP PRECISIONS	.XXXX = ± 0.25
		.XXX = ± 0.50
		.XX = ± 1.00
		.X = ± 2.00
		∠ = ± 0.50
	unless otherwise specified	
	units	millimeters

PART

PART	number	TC6FT6	phase	PRODUCTION
	name	TAPE CLIP		
	material	SEE CHART		

DRAWING

DRAWING	FORMAT	AH	CAD	CATIA V5	SCALE	2:1
	VERSION	J				
		A- SIZE (landscape)_N01		previous drawing number		
	drawn	S. ADAMS	checked	S. ADAMS	approved	
		12/07/07		03/30/12		
	type	CUSTOMER		sheet 1 of 1		
number	MT07-054-002CST					